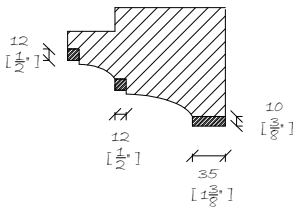
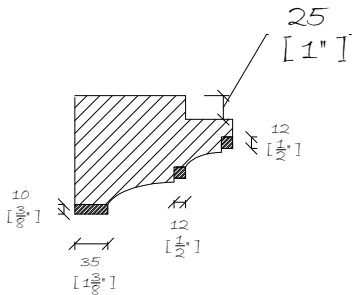
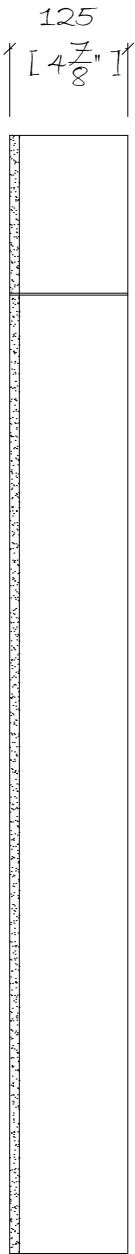
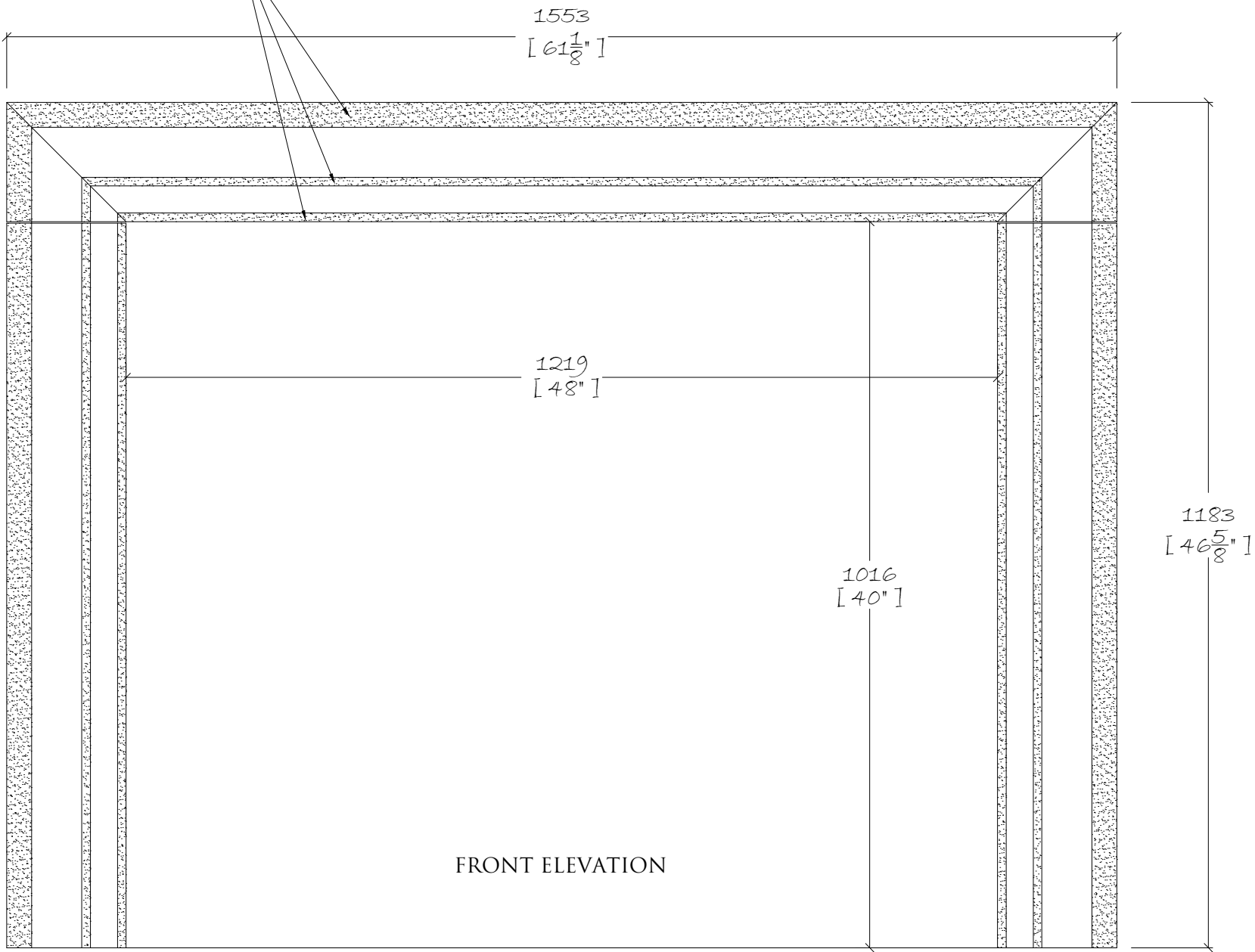


BRUSHED STEEL MOULDINGS



Limestones & Marble are a natural material and may vary in texture, color and veining intensity.  
Please consider a dimensional tolerance of  $\frac{1}{8}$ "

© CHESNEYS 2017

**CHESNEYS**

HEAD OFFICE:  
194-202 BATTERSEA PARK ROAD, BATTERSEA, LONDON  
TELEPHONE: +44 (0) 20 7627 1410  
WEB SITE: WWW.CHESNEYS.CO.UK  
E MAIL: SALES@CHESNEYS.CO.UK

Notes:

Client:

Collection:

**ERIC  
COHLER  
COLLECTION**

Mantle:

**THE  
GRIFFIN  
AMERICAN  
STANDARD**

Material:

**AZUL VALVERDE**

Mantle Weights:	
JAMB / EACH:	81.32 LB
METAL INLAY:	11.13 LB
HEADER:	130.49 LB
METAL INLAY:	17.61 LB
TOTAL MANTLE:	333.00 LB

Drawn by:

**LUIS VELA**

Date:	Scale:
12/04/2018	1:8 @ A3

Invoice Number:

Drawing No.:	Rev:
--------------	------